

Work for 3-1

Instructions for Drawings

After reading both selections and answering the questions, print off the digestive, circulatory, and respiratory system outlines.

Insert the title of each system at the top of each sheet.

Label the main parts of each system, and color appropriately (use the words below).

Next to the right and left of the bodies on each sheet, explain:

- how the circulatory system and digestive system work together to get glucose to each cell....reactant.
- how the respiratory system and circulatory system work together to get the oxygen to each cell...reactant.
- how the respiratory and circulatory system work together to get carbon dioxide and water vapor out of the body...product.

Color all the arteries red.

Color all the veins blue.

Include the following:

heart

lungs

bronchi

bronchioles

alveoli

veins

arteries

Instructions for Drawings

esophagus

large intestines

small intestines

capillaries

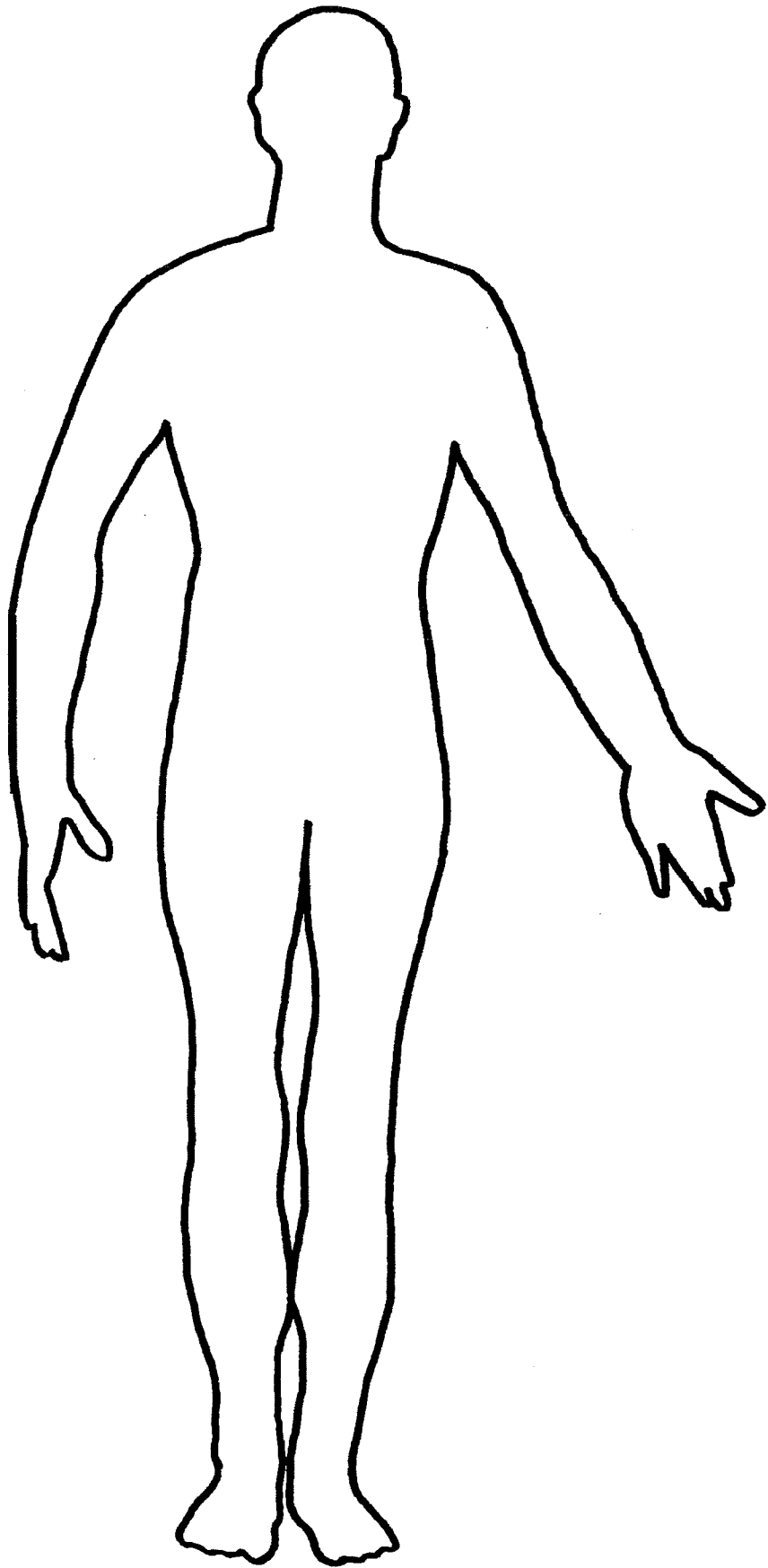
blood

trachea

mouth

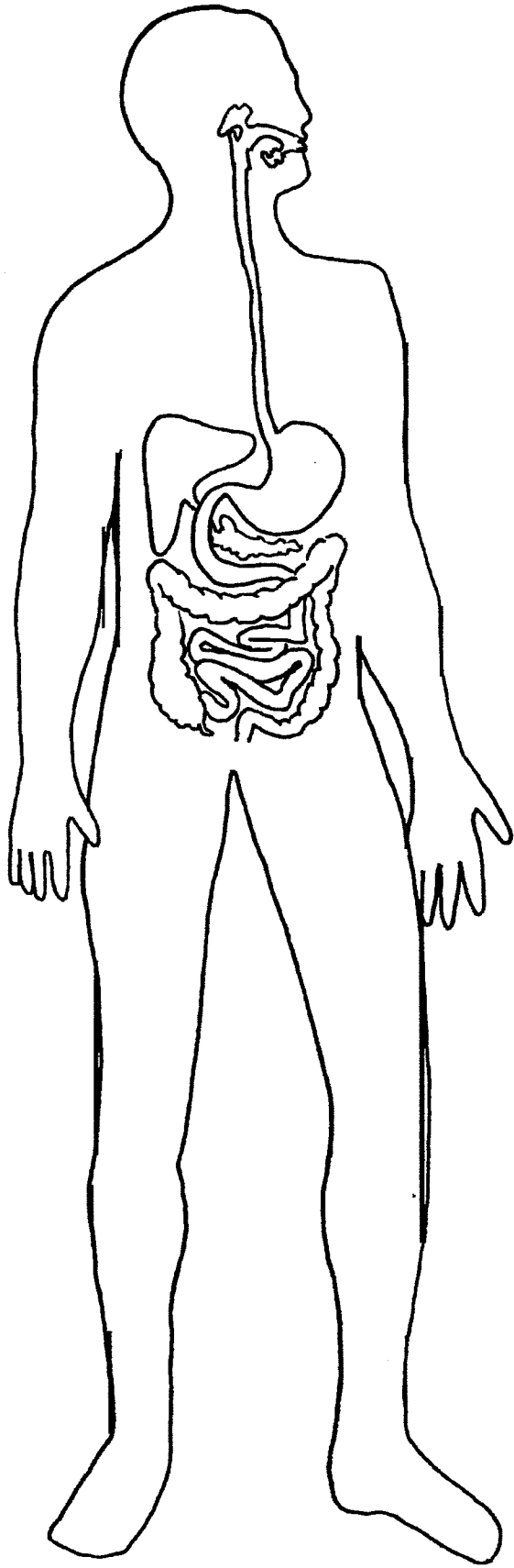
anus

Draw a close up view of the blood vessels/capillaries surrounding one cell and the reactants entering and products leaving the cell. Note: this is happening to each of the trillions of cells you have in your body.



C

U

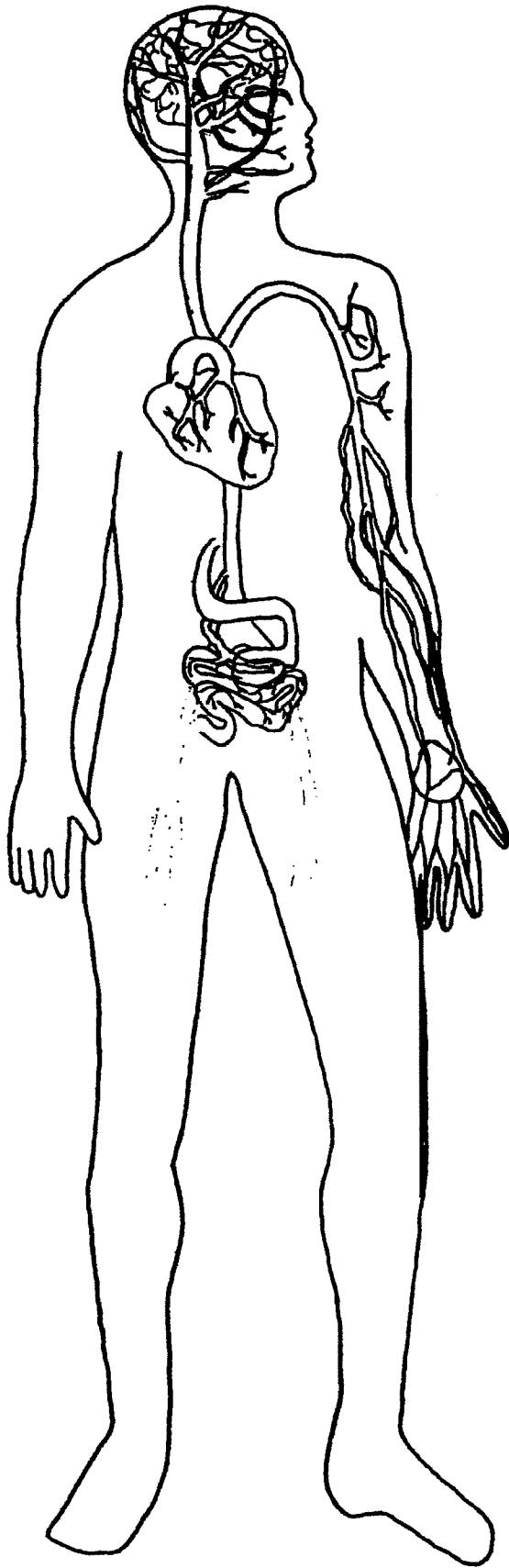


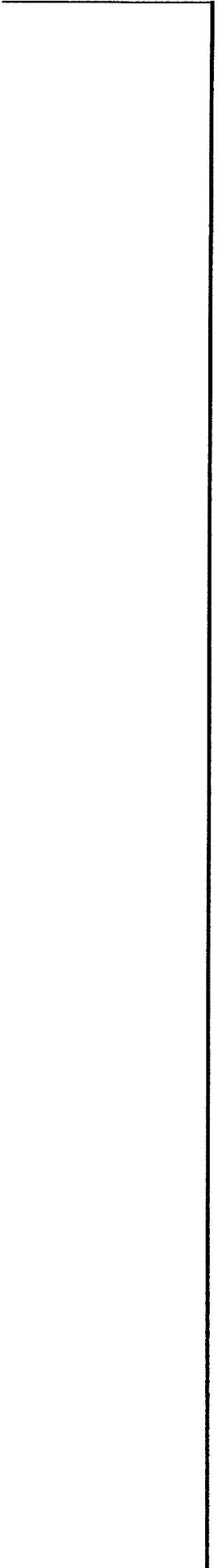
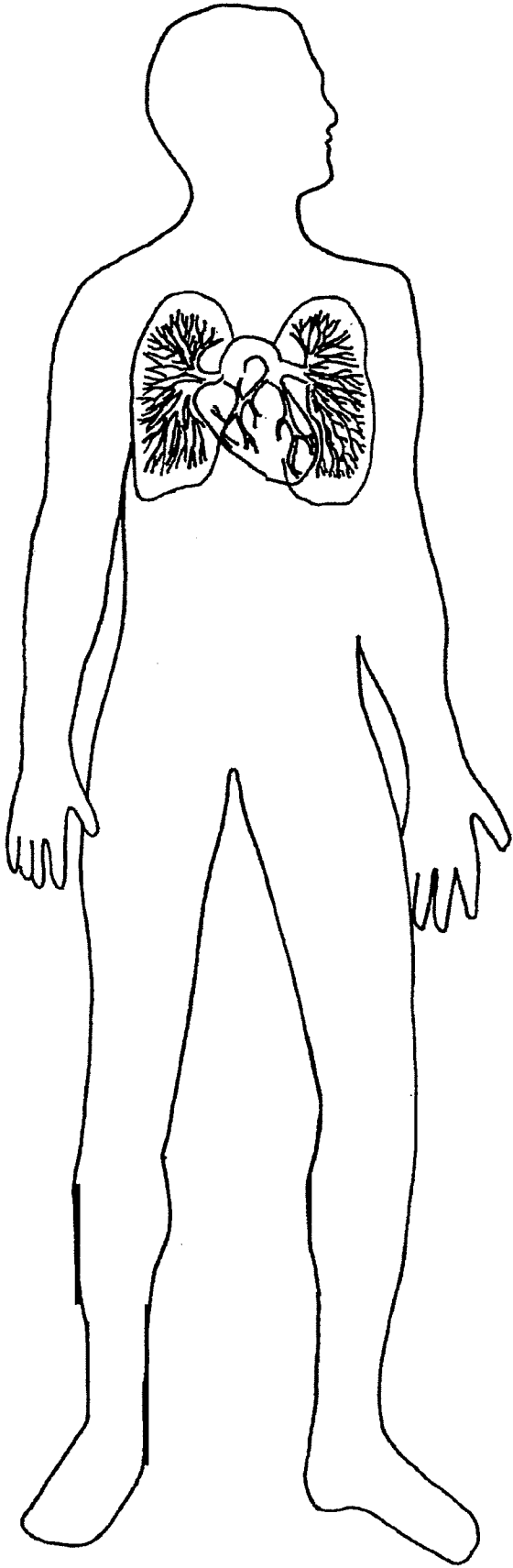
C

C

C







C

C

C

